



Bribie Shavings

PRESIDENT-Kim Bowers; VICE-PRESIDENT -John Grubb; SECRETARY -Ron Butterfield; TREASURER -Lorelle Green

COMMITTEE – Sue Bowen; Ian Bulger; John Dann; David Hight; June Jeffreys; Anita McDicken; Ian Trail

Bribie & District Woodcrafters Association Inc.

April 2020 Newsletter

www.bribiewoodies.org.au

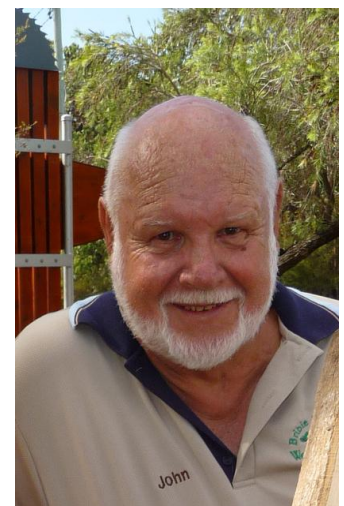
Shavings contributions to anitamcd@bigpond.com

Management Committee for 2020

Welcome to the clubs new committee. They are only too happy to assist in any way. Make yourself known to them and if you can be of help in any way for your club just speak up.

From left to right top row: John Grubb, Ian Trail, Ian Bulger, David Hight, Ron Butterfield
Seated; June Jeffreys, Lorelle Green, Anita McDicken, Sue Bowen

Kim (the new president) was unable to attend the meeting, John Dann did attend the meeting but I have no idea how he missed being in the group photo. Good job I have photos stored.



The AGM had a good attendance considering the Coronavirus situation. Members were separated as directed though managed to have a cuppa, cake and a quick chat after.



Current president Ian Trail vacated the chair and just before Ivan Medew took over procedures John Grubb surprised Ian with the “Life Membership” badge, first speaking on why the committee made this decision. Once again keeping with correct protocol no handshake!



The new committee was accepted unopposed and the general meeting continued with Ian still taking control but was shorter than some meetings.

How long this current committee will have to “practice being on the committee” is anyone’s guess. Our lives have changed so fast in so few hours.

As time progressed, most of the members are now aware the Club has been closed till further notice.

After this April Shavings, the editor and the Shavings will endeavour to keep you informed on whatever news comes to hand and of the resumption of club activities.

I would hope that with the enforced free time, members might consider writing an item for the Shavings. Perhaps how you filled in your time whilst away from the club and how that affected you.

Words from the Past President

Presidents Report at the 2020 Annual General Meeting of the Bribie and District Woodcrafters Association Inc.

My report comes at the end of a three year term as President of the Bribie and District Woodcrafters Association Inc. In some ways it is with regret that our constitution allows for only a three year term in this position. However I also believe that this provision is for the best for our association as it allows for fresh new ideas and management. I feel our new committee with some new faces will ensure this.

I can honestly say that it has been an honour to serve in this position and had the opportunity to work with the outgoing committee and other members who have worked so hard to make our club as successful as it is. I trust that this spirit will continue in the coming year.

I believe we have achieved many improvements in the club over the last year. Financially we are in a healthy position thanks to the two major fundraising activities of the Bunnings sausage sizzle and the project team of building and restoring furniture and other items. In terms of equipment we have a very well equipped and well maintained workshop. In short we have a great environment in which to enjoy our interest in working with wood.

Apart from the physical environment, the thing that contributes to this club is the members. Members who contribute so much of their time and expertise in a selfless effort to keep things ticking over and helping other members whenever possible.

Our policy of contributing to a worthy cause has this year been very successful with the Superpup for Lachlan campaign. It gladdens our hearts to see that Lachlan has now been allocated a chocolate brown Labrador pup that has now begun his training. We can continue to work with fundraising for the Superpup organisation.

At this point in time we find ourselves in a very difficult situation with all the problems associated with the coronavirus. With this there are so many things that threaten our normal lifestyle, in operating both in the club and outside. As much as possible and as long as possible we will strive to provide an important surety and consistency in our lives. I don't know as things emerge for how long we will be able to keep up our current arrangement, but if not please look after yourself and others. We will obviously emerge on the other side of this threat and return to a more normal life.

Happy woodworking

Ian Trail

Words from the President

Hello fellow Members,

Here we are embarking on a new year for Woodies in the most challenging times any of us will have experienced. As individuals we are responsible for our own actions and compliance with the recommendations by Government and medical advice.

The Club however must be governed by any guidelines or procedures put in place for the general population.

I would urge you to think about your fellow members' wellbeing whilst you are attending our Club. This includes recommended "safe" proximity to fellow members – especially at 'Smoko' times, etc.

We will endeavour to make disinfectant wipes and sprays available.

We have no intention of living in fear nor will we totally isolate ourselves unless the virus hits closer to home. We do believe however we need to be seen to be doing our bit in this situation after all we are

mostly in the vulnerable age bracket. Therefore, if you are feeling unwell, please stay at home and think of your fellow members.

On a lighter note – your new committee has some new blood and fresh ideas. We have had some recent incidents and the accreditation procedures will be revised to minimise the chance of any injury.

Lastly for your health and safety – stay safe and **WASH YOUR HANDS** regularly!

Kim Bowers

Since the AGM the following information has been sent to all members. Of course there are some members that do not use computers or the internet. If you are aware of any such member you might like to notify them of the clubs situation. I know Kevin Boyle is one such person and he has been informed. Ed.

Hullo Fellow Members

Your committee has decided that all activities and workshops at Bribie Woodcrafters will cease as of 4.00 pm today. (Wednesday 25th March).

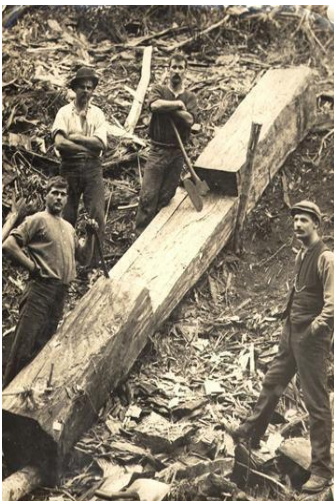
This is a regrettable but necessary decision and one we had to make to comply not only with Government restrictions but with the welfare of our membership as a priority.

This is going to be a difficult period for all Australians and I hope we all make it through.

Stay healthy and stay home!

Regards,

KIM BOWERS



Outback Boys

This month, we have worked through the rainy days and cleared most of the logs to the left of the driveway. There is still a great deal of beautiful Camphor waiting on the right hand side for its turn. So all that timber that was once there is now drying in various shapes and sizes somewhere in our storage area. Well most of it is. Some we chose to throw out and here's a little flashback in time and a bit of a reminisce to explain why we did that when usually we are careful to waste nothing.

Many of us living in our privileged age group would have spent our youngest years playing outdoors and climbing trees. This was easy because if your yard didn't have a mango tree growing in it, one of your mate's yards certainly did. They were a great source of fresh fruit in the season although messy to walk through and bumpy when the old Victa was doing its work. But all year round it was a great place to climb and spend an afternoon captaining a pirate's ship and the next day, on exactly the same branch, riding in a wagon and fighting off tribes of wild Indians or flying through space with Flash Gordon (as if that would ever really happen). Sometimes to make it easy to climb into whatever today's adventure might be, you would nail a few boards up the trunk.

And because Mango Trees were a dominant part of the yard and very versatile, they also were handy when you needed to nail up some wire mesh for a temporary chook pen or tie some plain wire around a low branch as a clothes line if the Hills Hoist was full or out of action. Stagorns and orchids could be easily nailed in place right where you wanted them while becoming established. There was also the well-known old adage about just driving a nail into the tree to improve fruiting.

By now you might have guessed the reason for these ramblings. There were many pieces of a large tree delivered. We had cut and stored most of it in a range of sizes. There were four large pieces left from the trunk. Roy has always said that the lowest four feet of a Mango tree should be avoided at all costs, for all the reasons above. The base and lower trunk were not considered for cutting and are still laying in our holding area. The other two higher trunk pieces, about 900mm diameter were brought in for processing. On the first one, three slabs were taken off and the fourth was almost through when Fred stopped, saying the saw was hard to move forward. We checked for any obstructions, all clear and since no one had heard a metallic sound or seen sparks, we decided to proceed. The blade immediately dived into the log, the blade flew off the machine with the teeth catching the rubber belt on the drive wheel and ripping it to pieces. After finishing the cut of the log with a chain saw, we found the culprit.



The photos show it clearly. There was a nail laying horizontally in the centre of the log and the blade had hit it end on and cut through the length of it, lost all sharpness and dived, pulled off the wheel and done its damage to the belt.

Kim was soon on the job, sourcing the new belts, fitting them and doing a saw tune up costing us only a day and a half. We decided to dump the rest of that log to avoid more surprises. The last log was brought in and on the third slice the blade hit two nails, one end on. This cost us another blade and the decision was made to dump the rest of this log and move onto another timber type. While a metal detector might appear to be an obvious solution, the nails were in the centre of a large log and 50 – 60 mm below the surface of the last cut. Too deep to be detected in timber. There is a great deal of Mango in store both dry and drying, which is just as well because it may be some time before Fiery Fred and the team will be keen to tackle another Mango tree. This one clearly gave so much pleasure and fun to some kids and so much misery to some old blokes.

On a parting note, please read, remember and act on the message below

Any timber you see standing up in the wood shed will have been through the process and should be dry. Wood laying horizontally with sticks as spacers will certainly be wet and should not be bought to use because it will still be drying. Definitely do not put it anywhere near table saws, bandsaws, thicknessers, sanders or any other machines. This may seem obvious but there have been instances recently where our hard-working maintenance team have had to spend hours cleaning sap off blades when they could have been spending their valuable time elsewhere.

WOULD THIS WOOD WORK FOR YOU?

+ ANOTHER \$50 WOOD VOUCHER TO THE WINNER AT THE NEXT MEETING +

AS THE CORONAVIRUS HAS CLOSED US DOWN KEEP YOUR BRIBIE PINE ARTICLE FOR JUDGEMENT WHEN WE ONCE AGAIN RESUME MEETINGS.

Hopefully you will come up with a masterpiece made from **BRIBIE PINE**. Remember that the point is to best show off the features of the particular timber type. Not necessarily the best article.

You would have selected your piece of **Bribie Pine** from the range of sizes in the timber shed or what you have stored at home.

Create your masterpiece, whether it's furniture, a bowl, box, egg cup, carved figure, pen, lidded box, routed sign, pyro piece, scroll saw piece, chopping board or anything else.

ENTRIES WILL BE JUDGED AT THE FIRST MEETING WHEN WE RESUME BACK AT THE CLUB.

Club Webpage

Ken Hooper has been working with Callum (our web master) in re-organising the layout of the web site. If you haven't looked at it in a while you will see several changes. Should you have any ideas or comments please go directly to Ken Hooper and he will follow it up with Callum.

The Class of March 2020

Their journey began six weeks ago. Seven members, keen to learn the art of wood turning, subjected themselves to the tutorial skills and tasks set by Ivan, Ian and Des. During the course they produced a number of articles including vases, toilet roll holders and bowls.



From left to right:

Juliana Platt, David Senior, Peter Doyle, Trevor Day, Mark Jones, Al Gearing and Ken Wright together with tutors Ian Trail, Des Wirges and Ivan Medew

Absolute concentration.

Ken Wright. Al Gearing David Senior



Throughout the course safety and tool handling skills dominated the activities as they engaged in specific tasks designed to develop the basic skills of wood turning.

Bunnings Sausage Sizzle



You would all be aware by now with all the Coronavirus issues that the Bunnings Sausage Sizzles have been cancelled.

This was a big part of the club's fundraising along with the project team and their work. Members will have the opportunity to help again once the world is back to normal.

Can you assist? Kim's number is 0427 876 271

Kim's Krafty Korner Tip

Amazing Mitre Joint Clamp.

Make these amazing miter joint clamps now that you have them the next time someone needs a frame



You'll Use it Over and Over Again.

Clamping up four mitred corners is tricky. You can buy specialty clamps for this, but I make my own. Here's how to do it. Start with a long 1x4, as it's easier (and safer) to clamp for making the angled cuts than a short piece. Mark out the blocks and then drill a 1-in. diameter hole in the centre of each one. The hole prevents the blocks from getting glued to your project. Cut 45-degree angles tangent to the hole and then cut the blocks free from the long board.

Woodcrafters Market Day

Woodies markets are usually held at the club on the **last Sunday of the month** (except for December when it is earlier in the month due to Christmas celebrations)

Once again due to the Coronavirus these markets run by the Art Centre have been cancelled till further notice. The Art Centre and Cafe are also closed till further notice.

John Grubb is the market co-ordinator. Ph. 0417 635 093

Cancellations

Many events have been cancelled that you can read or hear about in the media but the one Woodies would be most interested in, is the Maleny Wood Expo on the long weekend in May. **Now Cancelled.**

With so much spare time on your hands you will be able to complete all those UFO's (unfinished objects) you have been meaning to get to and kept putting them off.

Woodies Membership

By now everyone should have renewed their membership, unless they have decided to no longer be a member of the club. You would have done the first aid familiarization class also. Now you only need to come along and enjoy your hobby.

Please remember to wear your name badge while on the premises.

New Members



Welcome to - **Mary Graham, Valmae Rose, John Firth, Allan Stow and Ian McLean.**

Ian McLean's membership number is 20/1000 which means we have had 1000 members join our club since it started.

We hope you enjoy your new hobby.

All members are encouraged to attend the monthly meetings and be prepared to volunteer for anything that benefits the club. Like all clubs you only get as much from it as you are prepared to put into it.

If you are interested there are two project sheets on our website that will get you started on your new hobby. This will give you the chance to become familiar with the machinery you will be using and end up with a lovely toolbox and/or stool. <https://www.bribiewoodies.org.au/?name=PROJECT-SHEETS>

To All members;

If you have moved or changed contact details please notify Pauline Smith our membership co-ordinator. Pauline's email address is billpauline69@bigpond.com.

Orientation Day Reminder

Ian Trail will be conducting orientation on the 1st Tuesday of each month commencing at 8.00am.

Ian can be contacted on 0401134384 or trailil2@bigpond.com

Next orientation day will be when we resume club workshops.

Following Orientation John Dann will do the First Aid familiarization course.

Accreditation on Machinery

Prior arrangement must be made with the assessors before any accreditation will be undertaken. The list of assessors to contact can be found in the clean shed.

CLUB MEMBERS PLEASE NOTE WHEN CLUB ACTIVITIES RESUME:- If you have arrived at the sheds to do some work and it isn't your regular day of attending, the procedure is to locate the "shed captain", introduce yourself and confirm if it is ok for you to use the machinery and /or space as you may be intruding on a class or a work area set out for a particular project.

It is a condition of membership that you must wear your name badge while on the premises.

Projects from Around the Sheds



Whilst most people were at home dodging the Coronavirus or out stockpiling “toilet paper” our very own woodies were making possum boxes. Kim had no trouble recruiting “The Outback Boys” Peter, Chris, Fred and Paul, along with John Grubb to work a Saturday prior to the closure. Their stamina was maintained by the sandwiches June supplied and my thanks to her as the “roving reporter” for the photos of the day.



These boxes were made for Wildlife Rescue and Chris Wilson and Richard Hardaker from the Qld branch came to the club on Saturday to show off the possums. Chris asked if any injured animal is found to please call **Wildlife Rescue on 0478 901 801**, that includes bats also.

More Projects



Further to a story in last month's Shavings it appears there is more to the “table” story. I hear the legs were donated to the club and just stayed “laying around”.

June suggested a table be made, so Andy Anderson and Jim Daley made them, John Grubb sanded them and Mike Power did the spraying.

Here we have two very lovely solid tables for sale.



This customer was very happy with her beautiful letterbox made by John Denlay with some help from Pauline Smith.

They are such a talented lot these Woodies.

Pyrography Tuesday



Just for something different Max West spent a Tuesday afternoon at the club. Here he met the Pyro Tuesday folk and seemed to enjoy his time with us. Then word must have got around and Ray Jensen and Des Wirges spent the last Tuesday with very few Pyro persons before the club closed its doors.

My Garden Seat by Arthur Horsfall



What can you possibly do with first cuttings 25mm thick of a Red Cedar log that was twisted, bent and roughly sawn?

"Make a thousand pens," The Timber Yard Boys said as they hauled them towards the scrap heap.

"Just a moment!" I said "I might just find a use for them".

The badly twisted piece, I cut down the centre in a wobbly fashion to make a seat. The first flinch with bark on it became the back rest.

Check with the Timber Yard Boys. They have quality timbers of various species and perhaps some more scrap for a very lovely rustic garden seat.

I am pretty sure Arthur is referring to "The Outback Boys" but you will need to wait awhile for that rustic seat timber. Ed.

Ode to the Spell Checker

Eye halve a spelling chequer
It came with my pea sea
It plainly marques four my revue
Miss steaks eye kin knot sea.

Eye strike a key and type a word
And weight four it two say
Weather eye am wrong oar write
It shows me strait a weigh.

As soon as a mist ache is maid
It nose bee fore two long
And eye can put the error rite
Its rare lea ever wrong.

Eye have run this poem threw it
I am shore your pleased two no
Its letter perfect awl the weigh
My chequer tolled me sew.

Editorial.

Following on from last month, I must confess to making two mistakes and none of my proof readers picked them up.

I now have welcomed an ex school teacher to the team with the hope there won't be any more or perhaps fewer errors.

We are all human after all.

I have over the years been asked why I don't use spell checker. I am an old fashioned girl who still has a dictionary but I thought I would have a go at this "spell checker" thing and after reading this poem, I decided perhaps my few mistakes here and there might be forgiven (if they aren't picked up first by my proof readers) and I will stick with the dictionary.



News items are always required. Tell your club members what is happening in your area of the Woodies.

Please send all items for publication in the Shavings direct to the Editor. The deadline for news items or any contributions is **25th of the month.**

Shavings Editor Anita McDicken
Phone 0409 612 175 or 54 967346

anitamcd@bigpond.com

Words of Wisdom

"In leadership, life and all things it's far wiser to judge people by their deeds than their speech – their track record rather than their talk".

Rasheed Ogunlaru

"You cannot soar with the eagles as long as you hang out with the turkeys"

Joel Osteen



Birthdays

To all members born in the month of **April** we wish you a very happy birthday.

May your day be filled with good wishes and much joy.

Woodies Management and Committee Members at a glance.

Kim Bowers	0427 876 271	kccbowers@outlook.com
John Grubb	0417 635 093	jlgrubby1@bigpond.com
Ron Butterfield	3408 7284	rgb_whb@optusnet.com.au
Lorelle Green	3408 3251	lorelle@greenjnl.com.au
Sue Bowen	0414 293 446	smbowenau@yahoo.com.au
Ian Bulger	0437 850 064	ibulger@bigpond.net.au
John Dann	0415 237 167	kaynjohndann@tpg.com.au
David Hight	0458 923 773	dahight@gmail.co
June Jeffreys	0438 447 054	wounni@gmail.com
Anita McDicken	0409 612 175	anitamcd@bigpond.com
Ian Trail	0401 134 384	trailil2@bigpond.com

Committee Meetings are held on the third (3rd) Tuesday each month.

General Meetings are held on the fourth (4th) Tuesday each month at 9.00am sharp.

DATE SAVERS

MARCH 2020

End of March.....Bribie Shavings April Issue.

APRIL 2020

10th April.....Easter Good Friday

13th April.....Easter Monday

25th AprilAnzac Day **Time to reflect and remember.**

End of April.....Bribie Shavings May Issue.

MAY 2020

10th May.....Mothers Day **Be nice to your mother today**

End of May.....Bribie Shavings June Issue.

JUNE 2020

End of June.....Bribie Shavings July Issue